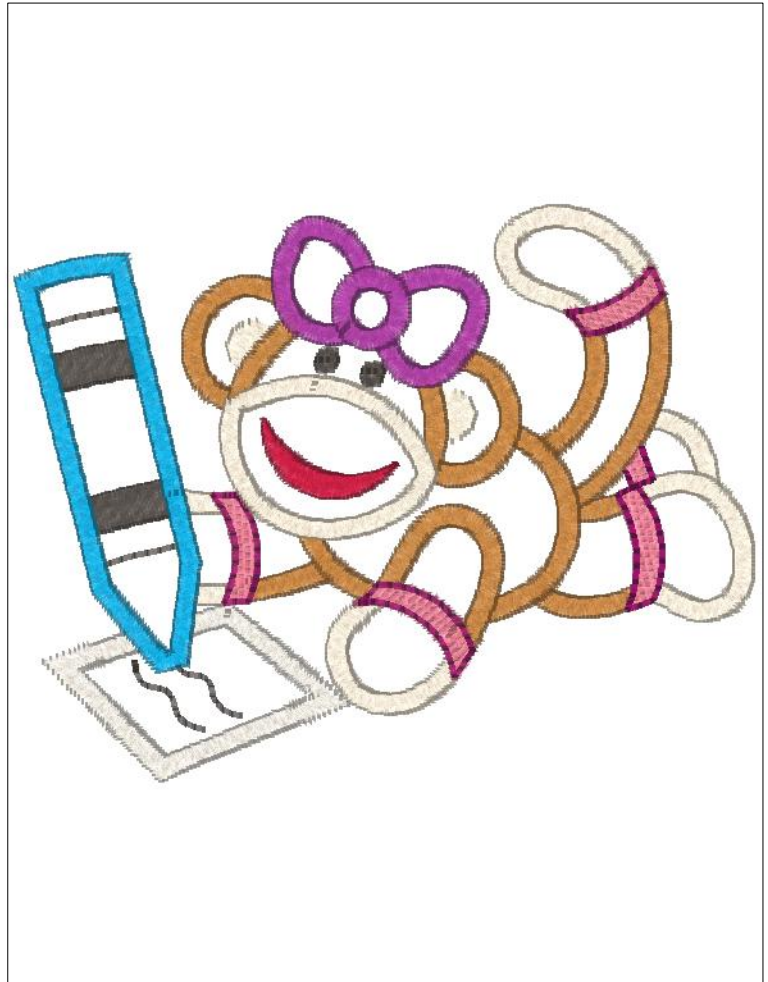


Printed 6/20/2012

3.85x3.00 inches; 7,052 stitches
20 thread changes; 11 colors

1. Applique placement line 9026 (R-A:9026)
2. Applique tack down 5543 (R-A:5675)
3. Applique placement line 9026 (R-A:9026)
4. Applique tack down 5543 (R-A:5675)
5. Applique placement line 9026 (R-A:9026)
6. Applique tack down 5543 (R-A:5675)
7. Applique placement line 9026 (R-A:9026)
8. Applique tack down 5543 (R-A:5675)
9. Applique placement line 9026 (R-A:9026)
10. Applique tack down 5543 (R-A:5675)
11. Jockey Red 5581 (R-A:5581)
12. Ivory 5635 (R-A:5635)
13. Sweet Dreams 9130 (R-A:9130)
14. Chrome 5839 (R-A:5839)
15. Charcoal 5565 (R-A:5565)
16. California Blue 5689 (R-A:5689)
17. Neon Pink 5711 (R-A:5711)
18. Raspberry Ice 9017 (R-A:9017)
19. Ivory 5635 (R-A:5635)
20. Rich Pink 9097 (R-A:9097)

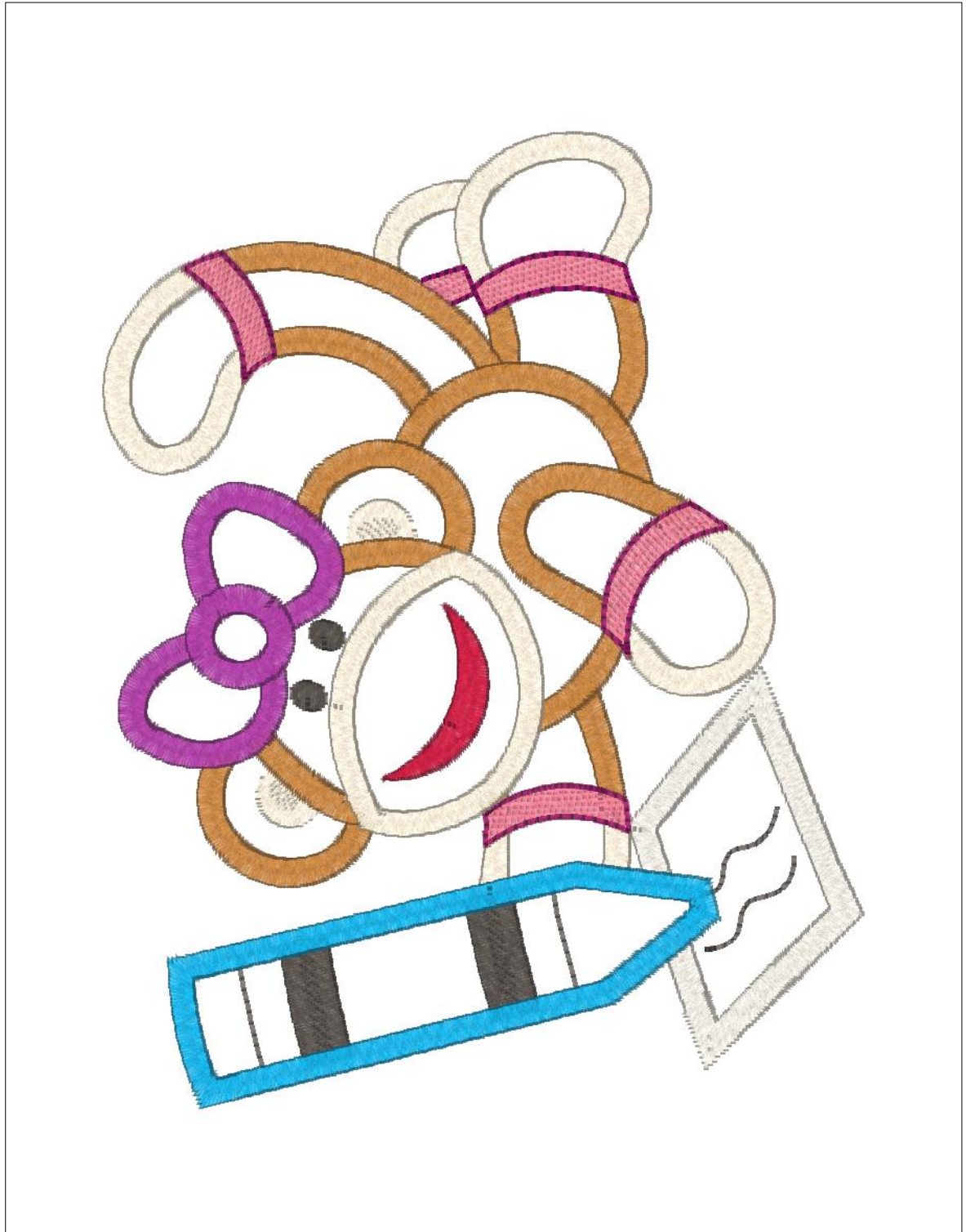


Design Notes:

Printed 6/20/2012

4.85x6.22 inches; 11,440 stitches
20 thread changes, 11 colors

- 1. Applique placement line 9026 (R-A:9026)
- 2. Applique tack down 5543 (R-A:5575)
- 3. Applique placement line 9026 (R-A:9026)
- 4. Applique tack down 5543 (R-A:5575)
- 5. Applique placement line 9026 (R-A:9026)
- 6. Applique tack down 5543 (R-A:5575)
- 7. Applique placement line 9026 (R-A:9026)
- 8. Applique tack down 5543 (R-A:5575)
- 9. Applique placement line 9026 (R-A:9026)
- 10. Applique tack down 5543 (R-A:5575)
- 11. Jockey Red 5581 (R-A:5581)
- 12. Ivory 5635 (R-A:5635)
- 13. Sweet Dreams 9130 (R-A:9130)
- 14. Chrome 5839 (R-A:5839)
- 15. Charcoal 5565 (R-A:5565)
- 16. California Blue 5689 (R-A:5689)
- 17. Neon Pink 5711 (R-A:5711)
- 18. Raspberry Ice 9017 (R-A:9017)
- 19. Ivory 5635 (R-A:5635)
- 20. Rich Pink 9097 (R-A:9097)

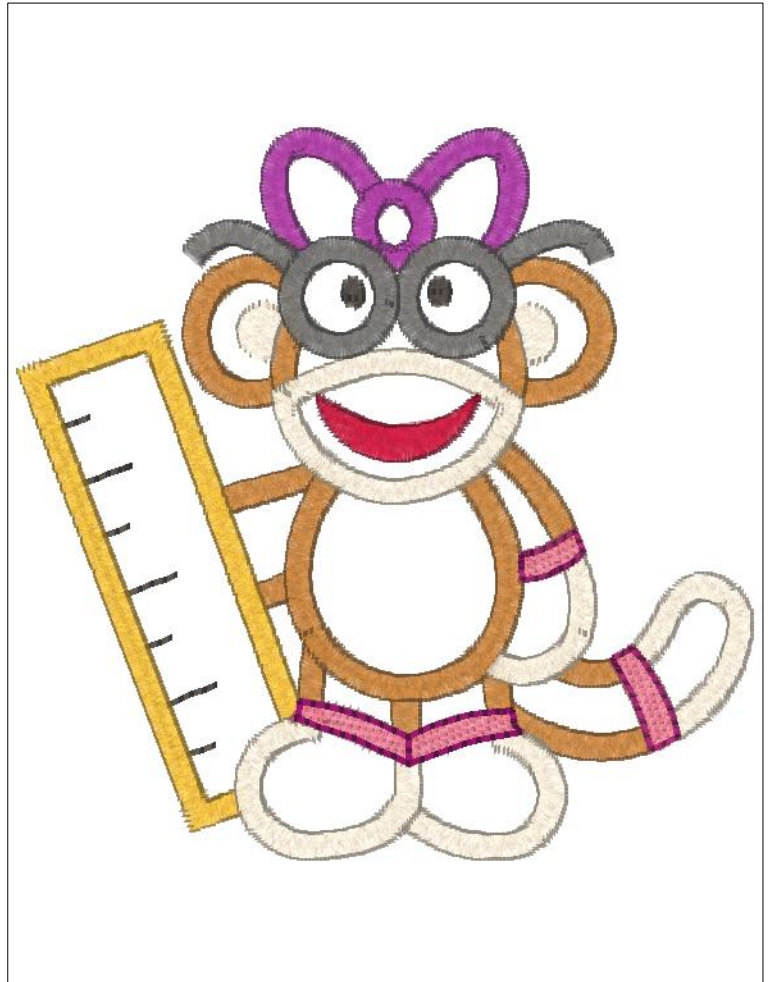


Design Notes:

Printed 6/20/2012

3.83x3.82 inches; 7,605 stitches
19 thread changes; 11 colors

1. Applique placement line 9026 (R-A:9026)
2. Applique tack down 5543 (R-A:5675)
3. Applique placement line 9026 (R-A:9026)
4. Applique tack down 5543 (R-A:5675)
5. Applique placement line 9026 (R-A:9026)
6. Applique tack down 5543 (R-A:5675)
7. Applique placement line 9026 (R-A:9026)
8. Applique tack down 5543 (R-A:5675)
9. Applique placement line 9026 (R-A:9026)
10. Applique tack down 5543 (R-A:5675)
11. Sweet Dreams 9130 (R-A:9130)
12. Charcoal 5565 (R-A:5565)
13. Mustard 5631 (R-A:5631)
14. Ivory 5635 (R-A:5635)
15. Jockey Red 5581 (R-A:5581)
16. Rich Pink 9097 (R-A:9097)
17. Aged Charcoal 5865 (R-A:5865)
18. Neon Pink 5711 (R-A:5711)
19. Raspberry Ice 9017 (R-A:9017)



Design Notes:

Printed 6/20/2012

4.83x4.81 inches; 9,485 stitches
19 thread changes; 11 colors

- 1. Applique placement line 9026 (R-A-9026)
- 2. Applique tack down 5543 (R-A-5675)
- 3. Applique placement line 9026 (R-A-9026)
- 4. Applique tack down 5543 (R-A-5675)
- 5. Applique placement line 9026 (R-A-9026)
- 6. Applique tack down 5543 (R-A-5675)
- 7. Applique placement line 9026 (R-A-9026)
- 8. Applique tack down 5543 (R-A-5675)
- 9. Applique placement line 9026 (R-A-9026)
- 10. Applique tack down 5543 (R-A-5675)
- 11. Sweet Dreams 9130 (R-A-9130)
- 12. Charcoal 5565 (R-A-5565)
- 13. Mustard 5531 (R-A-5531)
- 14. Ivory 5635 (R-A-5635)
- 15. Jockey Red 5581 (R-A-5581)
- 16. Rich Pink 9097 (R-A-9097)
- 17. Aged Charcoal 5865 (R-A-5865)
- 18. Neon Pink 5711 (R-A-5711)
- 19. Raspberry Ice 9017 (R-A-9017)

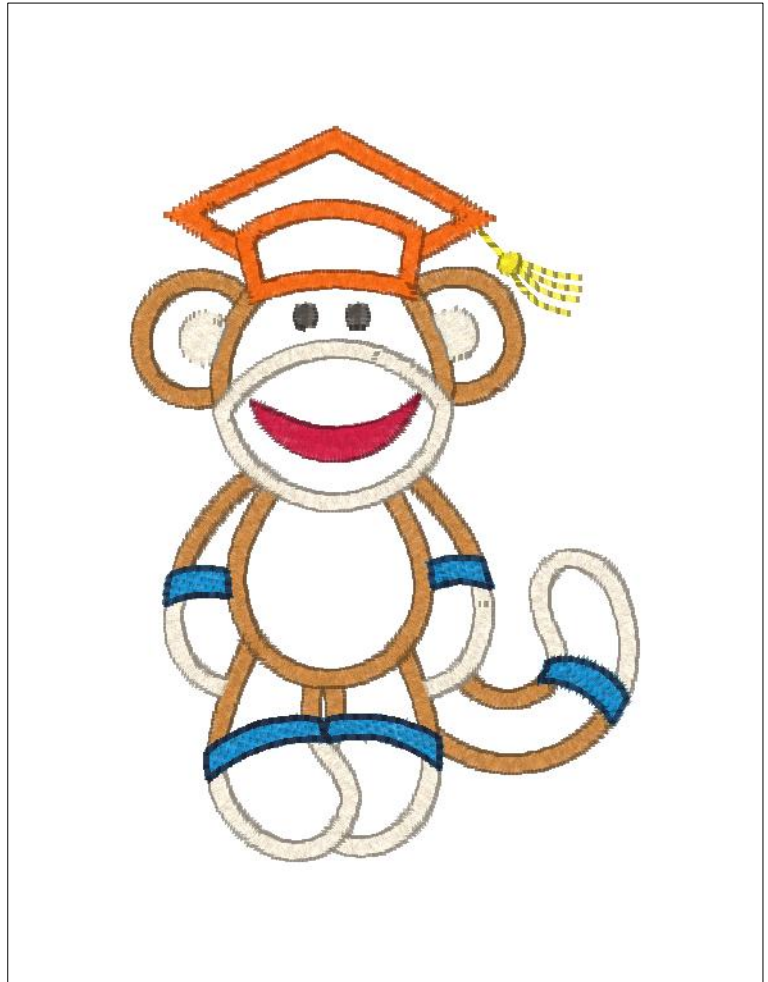


Design Notes:

Printed 6/20/2012

2.65x3.83 inches; 5,887 stitches
14 thread changes; 10 colors

- 1. Applique placement line 9026 (R-A:9026)
- 2. Applique tack down 5543 (R-A:5675)
- 3. Applique placement line 9026 (R-A:9026)
- 4. Applique tack down 5543 (R-A:5675)
- 5. Applique placement line 9026 (R-A:9026)
- 6. Applique tack down 5543 (R-A:5675)
- 7. Sweet Dreams 9130 (R-A:9130)
- 8. Ivory 5635 (R-A:5635)
- 9. China Blue 5823 (R-A:5823)
- 10. Light Navy 5603 (R-A:5603)
- 11. Charcoal 5565 (R-A:5565)
- 12. Black Eyed Susie 5861 (R-A:5861)
- 13. Grilled Orange 9072 (R-A:9072)
- 14. Jockey Red 5581 (R-A:5581)

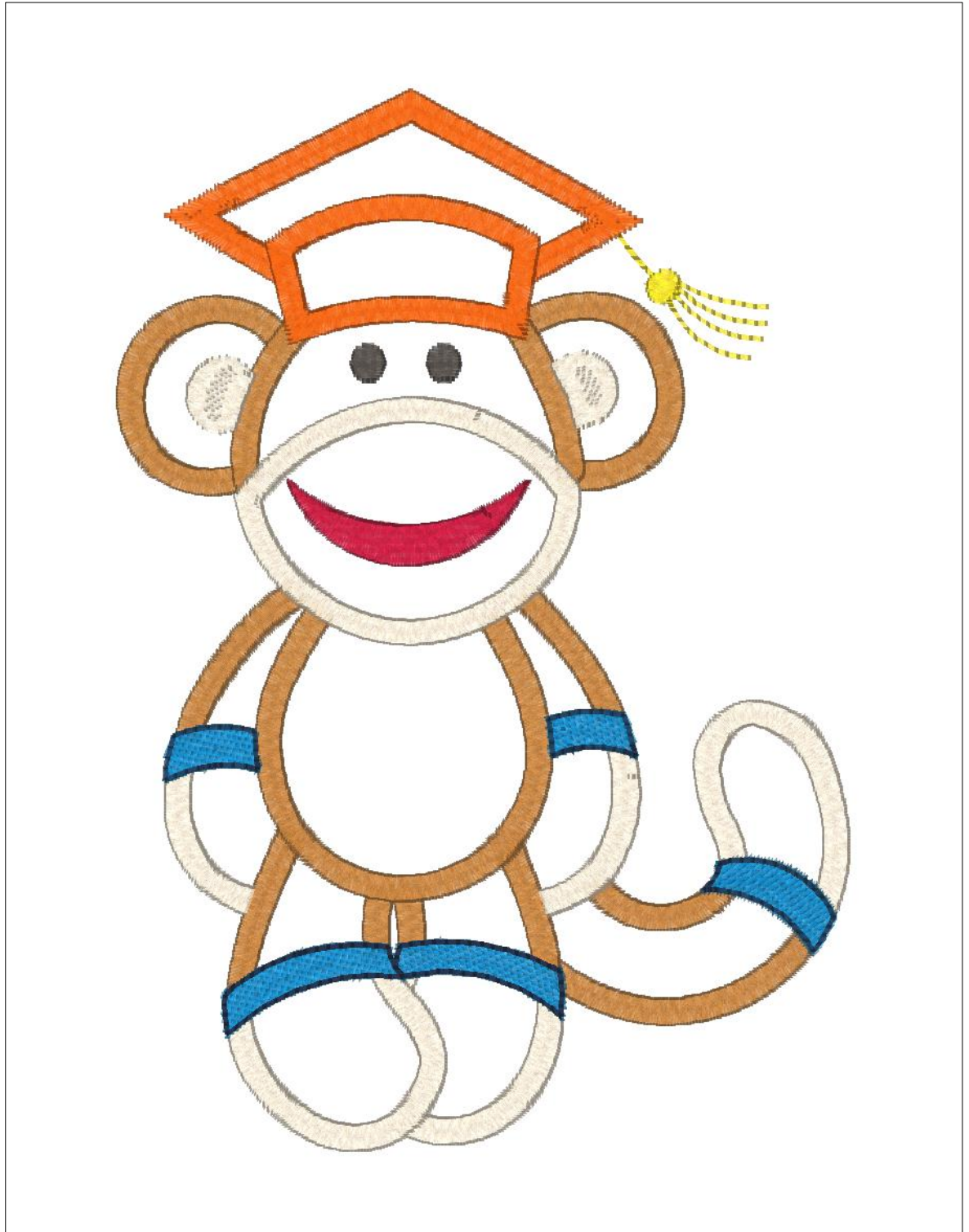


Design Notes:

Printed 6/20/2012

4.67x6.77 inches; 10,487 stitches
14 thread changes; 10 colors

- 1. Applique placement line 9026 (R-A-9026)
- 2. Applique tack down 5543 (R-A-5575)
- 3. Applique placement line 9026 (R-A-9026)
- 4. Applique tack down 5543 (R-A-5575)
- 5. Applique placement line 9026 (R-A-9026)
- 6. Applique tack down 5543 (R-A-5575)
- 7. Sweet Dreams 9130 (R-A-9130)
- 8. Ivory 5635 (R-A-5635)
- 9. China Blue 5823 (R-A-5823)
- 10. Light Navy 5903 (R-A-5903)
- 11. Jockey Red 5581 (R-A-5581)
- 12. Charcoal 5565 (R-A-5565)
- 13. Black Eye'd Seam 5861 (R-A-5861)
- 14. Grilled Orange 9072 (R-A-9072)



Design Notes:

Printed 6/20/2012

3.80x3.28 inches; 7,378 stitches
21 thread changes; 13 colors

1. Applique placement line 9026 (R-A:9026)
2. Applique tack down 5543 (R-A:5675)
3. Applique placement line 9026 (R-A:9026)
4. Applique tack down 5543 (R-A:5675)
5. Applique placement line 9026 (R-A:9026)
6. Applique tack down 5543 (R-A:5675)
7. Applique placement line 9026 (R-A:9026)
8. Applique tack down 5543 (R-A:5675)
9. Applique placement line 9026 (R-A:9026)
10. Applique tack down 5543 (R-A:5675)
11. Green 5509 (R-A:5509)
12. Light Navy 5603 (R-A:5603)
13. Sweet Dreams 9130 (R-A:9130)
14. Pillow Blue 9059 (R-A:9059)
15. Copen 5545 (R-A:5545)
16. Ivory 5635 (R-A:5635)
17. Neon Pink 5711 (R-A:5711)
18. Raspberry Ice 9017 (R-A:9017)
19. Charcoal 5565 (R-A:5565)
20. Tulip 5586 (R-A:5586)
21. Jockey Red 5581 (R-A:5581)

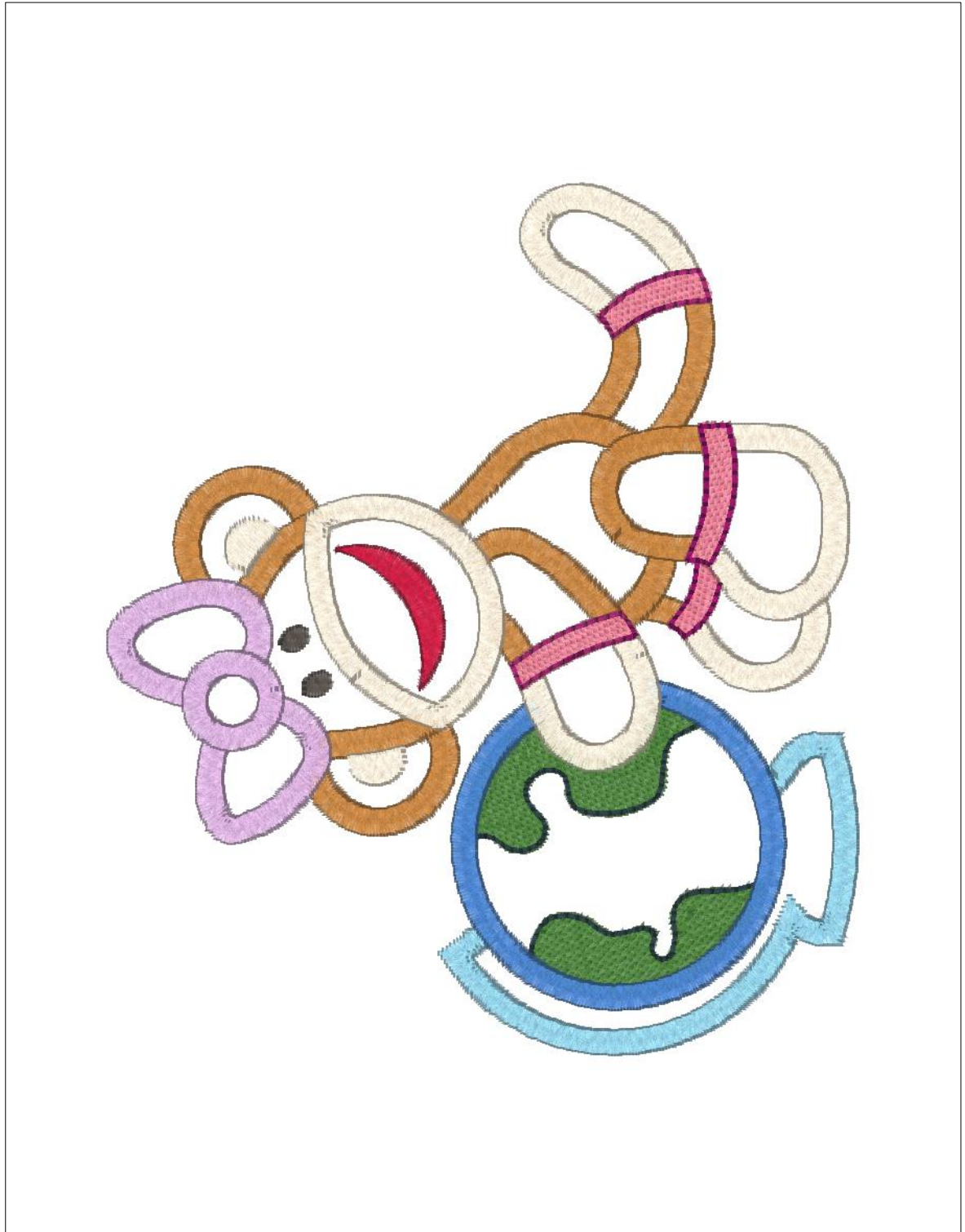


Design Notes:

Printed 6/20/2012

4.80x5.57 inches; 10,877 stitches
21 thread changes; 13 colors

- 1. Applique placement line 9026 (R-A-9026)
- 2. Applique tack down 5543 (R-A-5575)
- 3. Applique placement line 9026 (R-A-9026)
- 4. Applique tack down 5543 (R-A-5575)
- 5. Applique placement line 9026 (R-A-9026)
- 6. Applique tack down 5543 (R-A-5575)
- 7. Applique placement line 9026 (R-A-9026)
- 8. Applique tack down 5543 (R-A-5575)
- 9. Applique placement line 9026 (R-A-9026)
- 10. Applique tack down 5543 (R-A-5575)
- 11. Green 5509 (R-A-5509)
- 12. Light Navy 5603 (R-A-5603)
- 13. Sweet Dreams 9130 (R-A-9130)
- 14. Pillow Blue 9059 (R-A-9059)
- 15. Copen 5545 (R-A-5545)
- 16. Ivory 5635 (R-A-5635)
- 17. Neon Pink 5711 (R-A-5711)
- 18. Raspberry Ice 9017 (R-A-9017)
- 19. Jockey Red 5581 (R-A-5581)
- 20. Charcoal 5565 (R-A-5565)
- 21. Tulip 5586 (R-A-5586)

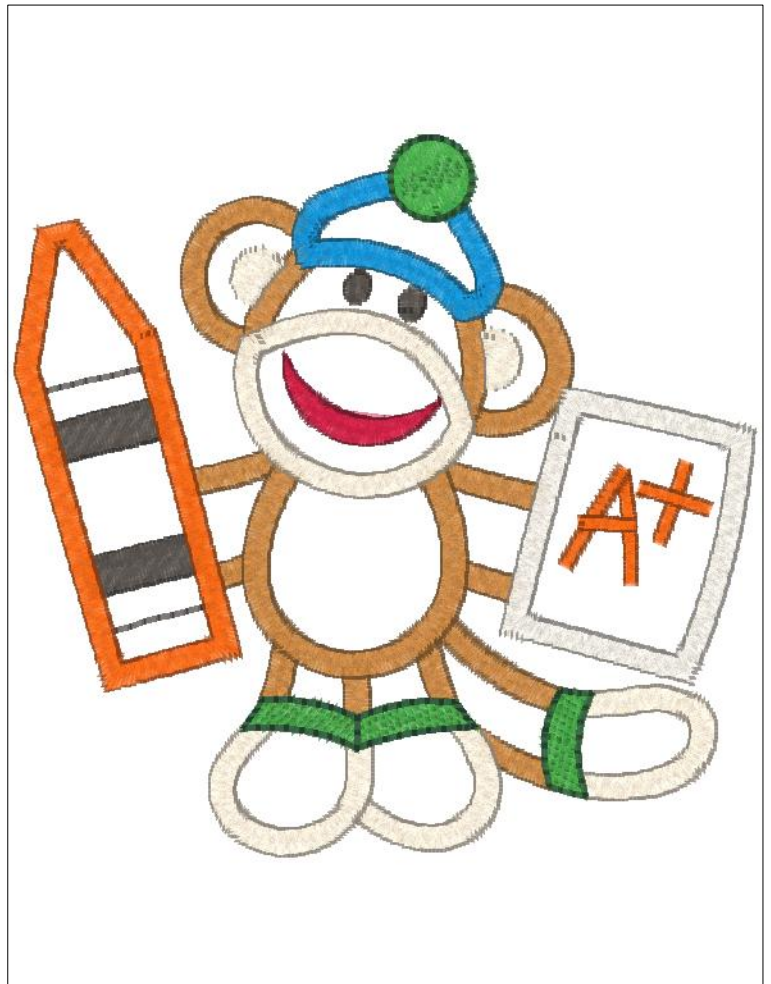


Design Notes:

Printed 6/20/2012

3.86x3.76 inches; 7,452 stitches
19 thread changes; 11 colors

1. Applique placement line 9026 (R-A:9026)
2. Applique tack down 5543 (R-A:5675)
3. Applique placement line 9026 (R-A:9026)
4. Applique tack down 5543 (R-A:5675)
5. Applique placement line 9026 (R-A:9026)
6. Applique tack down 5543 (R-A:5675)
7. Applique placement line 9026 (R-A:9026)
8. Applique tack down 5543 (R-A:5675)
9. Applique placement line 9026 (R-A:9026)
10. Applique tack down 5543 (R-A:5675)
11. Sweet Dreams 9130 (R-A:9130)
12. Ivory 5635 (R-A:5635)
13. Charcoal 5565 (R-A:5565)
14. Grilled Orange 9072 (R-A:9072)
15. Jockey Red 5581 (R-A:5581)
16. China Blue 5823 (R-A:5823)
17. Emerald 5514 (R-A:5514)
18. Ivy 5852 (R-A:5852)
19. Chrome 5839 (R-A:5839)

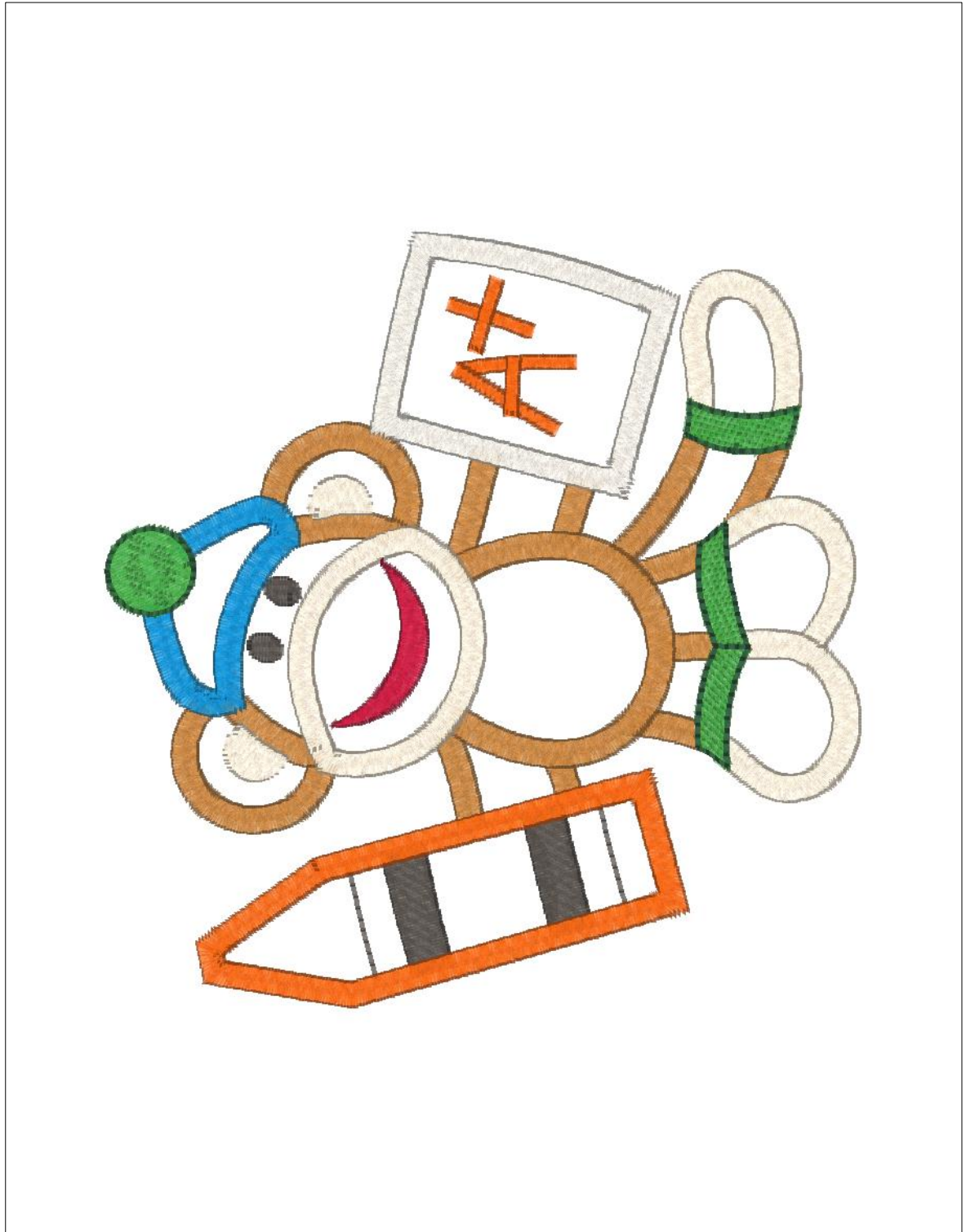


Design Notes:

Printed 6/20/2012

4.82x4.94 inches; 9,421 stitches
19 thread changes; 11 colors

- 1. Applique placement line 9026 (R-A:9026)
- 2. Applique tack down 5543 (R-A:5675)
- 3. Applique placement line 9026 (R-A:9026)
- 4. Applique tack down 5543 (R-A:5675)
- 5. Applique placement line 9026 (R-A:9026)
- 6. Applique tack down 5543 (R-A:5675)
- 7. Applique placement line 9026 (R-A:9026)
- 8. Applique tack down 5543 (R-A:5675)
- 9. Applique placement line 9026 (R-A:9026)
- 10. Applique tack down 5543 (R-A:5675)
- 11. Sweet Dreams 9130 (R-A:9130)
- 12. Ivory 5635 (R-A:5635)
- 13. Charcoal 5565 (R-A:5565)
- 14. Grilled Orange 9072 (R-A:9072)
- 15. Jockey Red 5581 (R-A:5581)
- 16. China Blue 5823 (R-A:5823)
- 17. Emerald 5514 (R-A:5514)
- 18. Ivy 5852 (R-A:5852)
- 19. Chrome 5839 (R-A:5839)

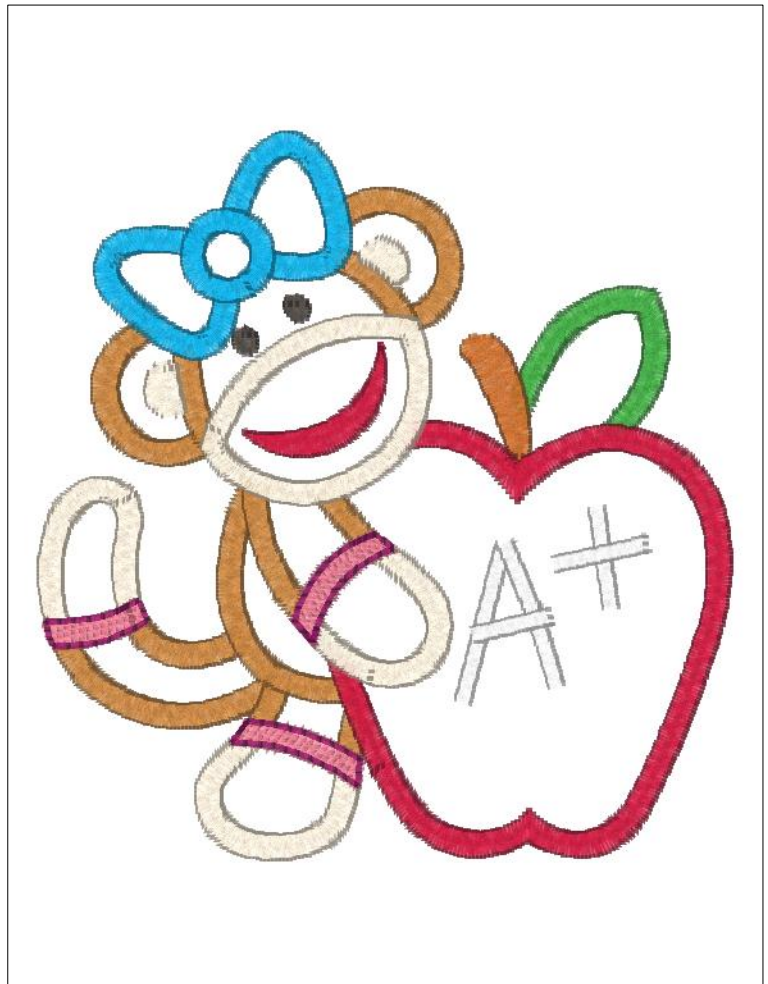


Design Notes:

Printed 6/20/2012

3.61x3.80 inches; 6,904 stitches
21 thread changes; 12 colors

- 1. Applique placement line 9026 (R-A:9026)
- 2. Applique tack down 5543 (R-A:5675)
- 3. Applique placement line 9026 (R-A:9026)
- 4. Applique tack down 5543 (R-A:5675)
- 5. Applique placement line 9026 (R-A:9026)
- 6. Applique tack down 5543 (R-A:5675)
- 7. Applique placement line 9026 (R-A:9026)
- 8. Applique tack down 5543 (R-A:5675)
- 9. Applique placement line 9026 (R-A:9026)
- 10. Applique tack down 5543 (R-A:5675)
- 11. Natural White 5642 (R-A:5642)
- 12. Sweet Dreams 9130 (R-A:9130)
- 13. Emerald 5514 (R-A:5514)
- 14. Hazel 5781 (R-A:5781)
- 15. Jockey Red 5581 (R-A:5581)
- 16. Ivory 5635 (R-A:5635)
- 17. Charcoal 5565 (R-A:5565)
- 18. California Blue 5689 (R-A:5689)
- 19. Jockey Red 5581 (R-A:5581)
- 20. Neon Pink 5711 (R-A:5711)
- 21. Raspberry Ice 9017 (R-A:9017)

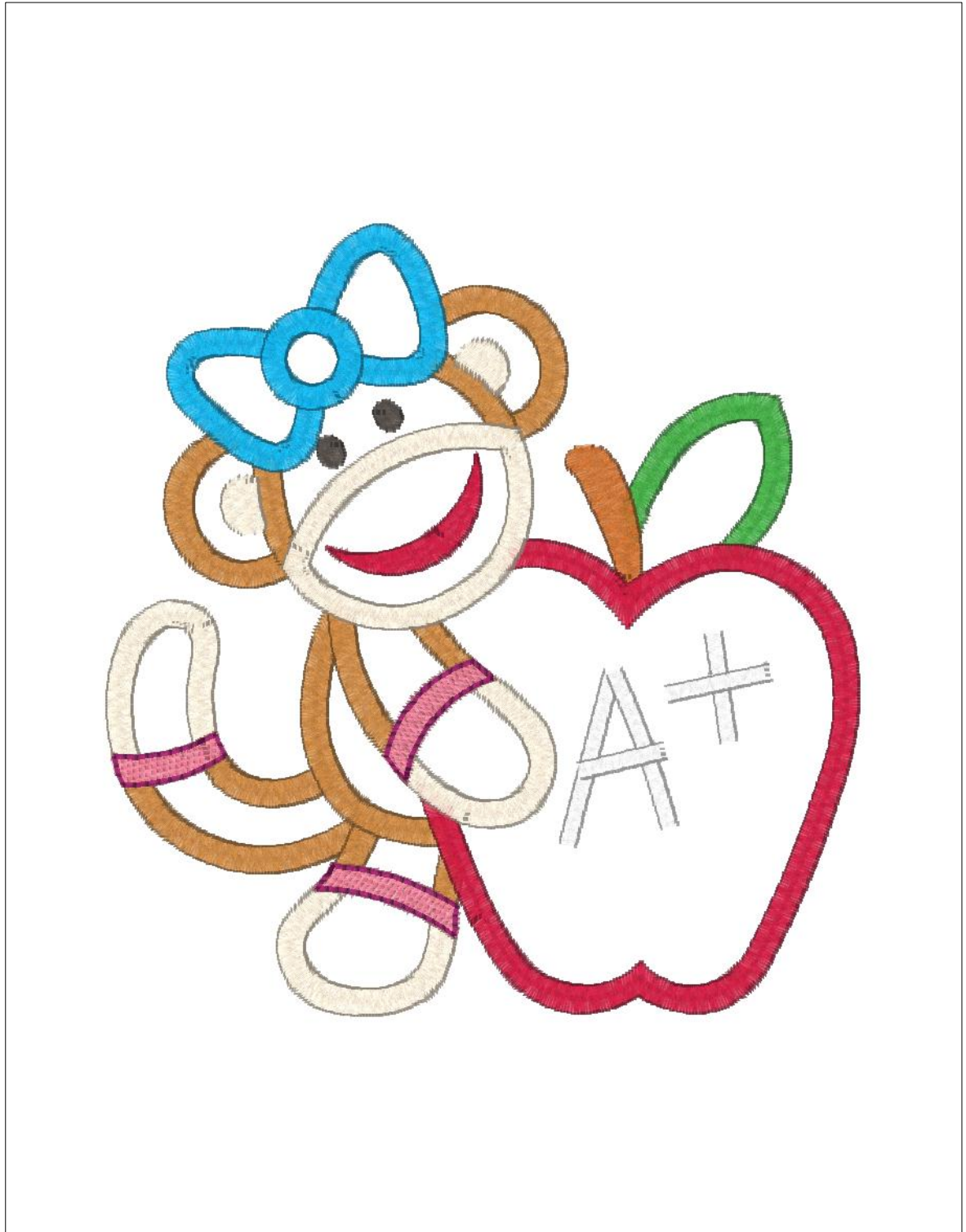


Design Notes:

Printed 6/20/2012

4.81x5.06 inches; 9,110 stitches
21 thread changes; 12 colors

- 1. Applique placement line 9026 (R-A-9026)
- 2. Applique tack down 5543 (R-A-5675)
- 3. Applique placement line 9026 (R-A-9026)
- 4. Applique tack down 5543 (R-A-5675)
- 5. Applique placement line 9026 (R-A-9026)
- 6. Applique tack down 5543 (R-A-5675)
- 7. Applique placement line 9026 (R-A-9026)
- 8. Applique tack down 5543 (R-A-5675)
- 9. Applique placement line 9026 (R-A-9026)
- 10. Applique tack down 5543 (R-A-5675)
- 11. Natural White 5642 (R-A-5642)
- 12. Sweet Dreams 9130 (R-A-9130)
- 13. Emerald 5514 (R-A-5514)
- 14. Hazel 5781 (R-A-5781)
- 15. Jockey Red 5581 (R-A-5581)
- 16. Ivory 5635 (R-A-5635)
- 17. Charcoal 5565 (R-A-5565)
- 18. California Blue 5689 (R-A-5689)
- 19. Jockey Red 5581 (R-A-5581)
- 20. Neon Pink 5711 (R-A-5711)
- 21. Raspberry Ice 9017 (R-A-9017)

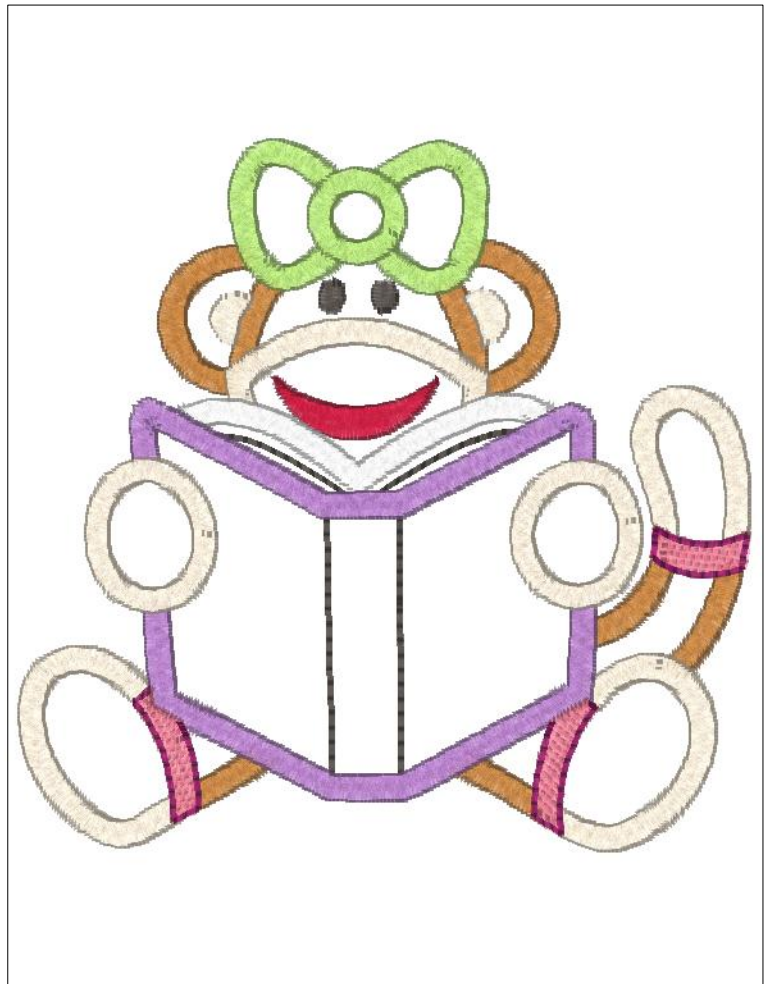


Design Notes:

Printed 6/20/2012

3.81x3.71 inches; 7,259 stitches
20 thread changes; 11 colors

1. Applique placement line 9026 (R-A:9026)
2. Applique tack down 5543 (R-A:5675)
3. Applique placement line 9026 (R-A:9026)
4. Applique tack down 5543 (R-A:5675)
5. Applique placement line 9026 (R-A:9026)
6. Applique tack down 5543 (R-A:5675)
7. Applique placement line 9026 (R-A:9026)
8. Applique tack down 5543 (R-A:5675)
9. Applique placement line 9026 (R-A:9026)
10. Applique tack down 5543 (R-A:5675)
11. Sweet Dreams 9130 (R-A:9130)
12. Ivory 5635 (R-A:5635)
13. Pastoral Green 5621 (R-A:5621)
14. Charcoal 5565 (R-A:5565)
15. Jockey Red 5581 (R-A:5581)
16. Natural White 5642 (R-A:5642)
17. Cindy Purple 9088 (R-A:9088)
18. Ivory 5635 (R-A:5635)
19. Neon Pink 5711 (R-A:5711)
20. Raspberry Ice 9017 (R-A:9017)

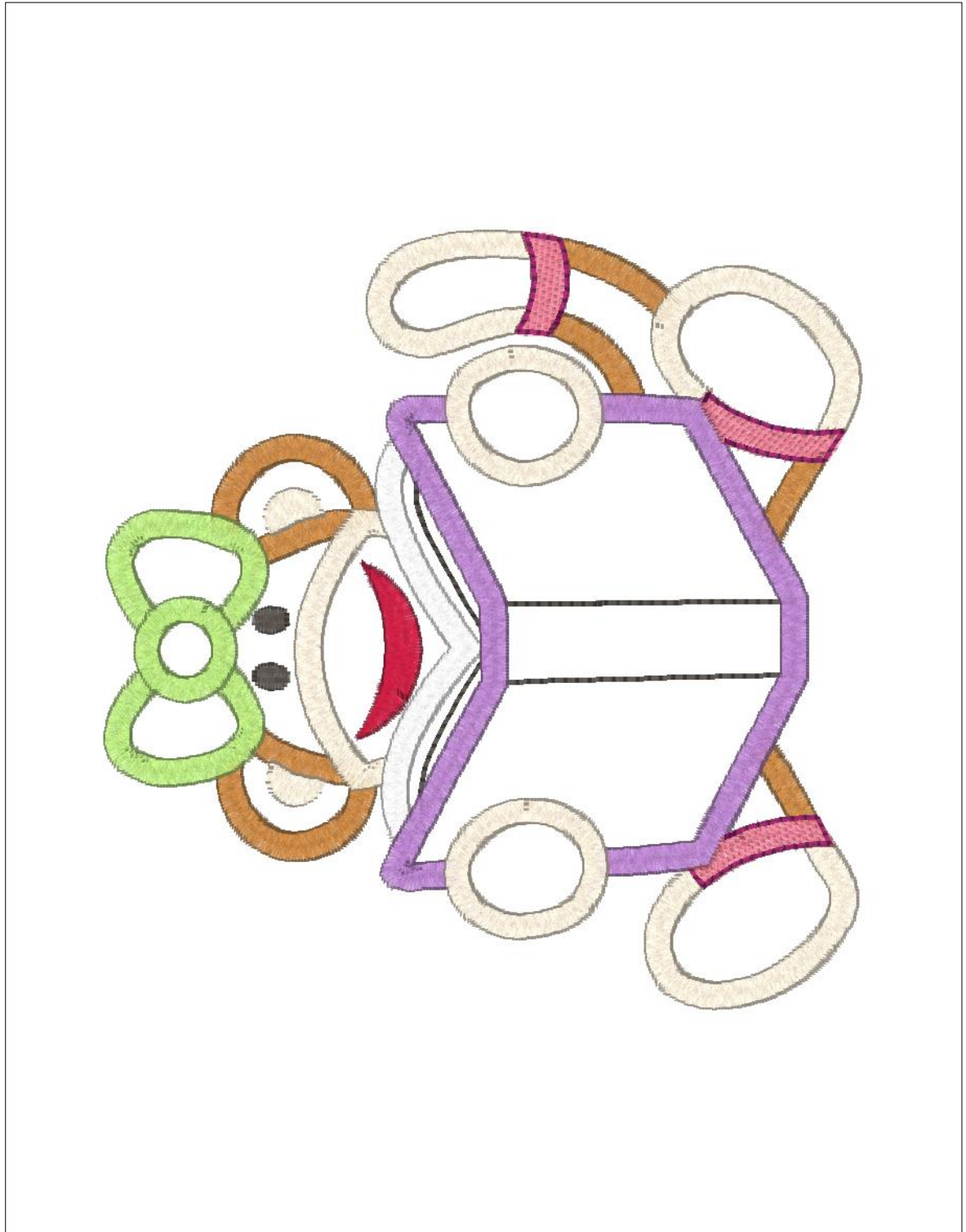


Design Notes:

Printed 6/20/2012

4.83x4.97 inches; 9,343 stitches
20 thread changes; 11 colors

- 1. Applique placement line 9026 (R-A-9026)
- 2. Applique tack down 5543 (R-A-5675)
- 3. Applique placement line 9026 (R-A-9026)
- 4. Applique tack down 5543 (R-A-5675)
- 5. Applique placement line 9026 (R-A-9026)
- 6. Applique tack down 5543 (R-A-5675)
- 7. Applique placement line 9026 (R-A-9026)
- 8. Applique tack down 5543 (R-A-5675)
- 9. Applique placement line 9026 (R-A-9026)
- 10. Applique tack down 5543 (R-A-5675)
- 11. Sweet Dreams 9130 (R-A-9130)
- 12. Ivory 5635 (R-A-5635)
- 13. Pastoral Green 5621 (R-A-5621)
- 14. Charcoal 5565 (R-A-5565)
- 15. Jockey Red 5581 (R-A-5581)
- 16. Natural White 5642 (R-A-5642)
- 17. Cindy Purple 9088 (R-A-9088)
- 18. Ivory 5635 (R-A-5635)
- 19. Neon Pink 5711 (R-A-5711)
- 20. Raspberry Ice 9017 (R-A-9017)

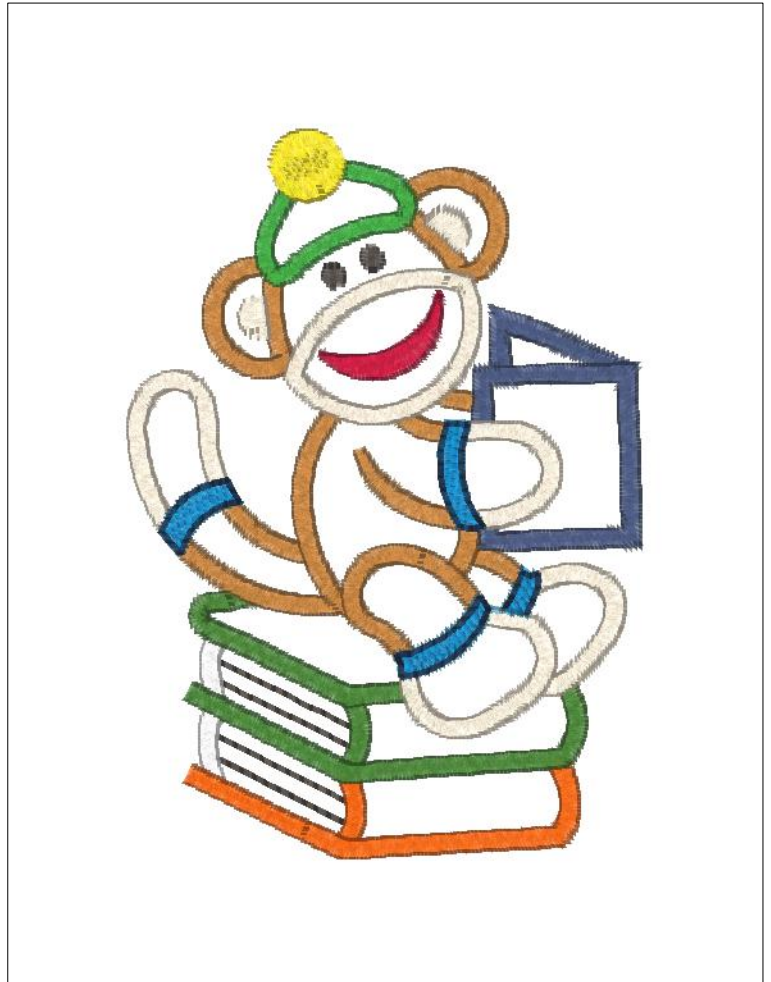


Design Notes:

Printed 6/20/2012

2.68x3.80 inches; 7,250 stitches
26 thread changes; 14 colors

- 1. Applique placement line 9026 (R-A:9026)
- 2. Applique tack down 5543 (R-A:5675)
- 3. Applique placement line 9026 (R-A:9026)
- 4. Applique tack down 5543 (R-A:5675)
- 5. Applique placement line 9026 (R-A:9026)
- 6. Applique tack down 5543 (R-A:5675)
- 7. Applique placement line 9026 (R-A:9026)
- 8. Applique tack down 5543 (R-A:5675)
- 9. Applique placement line 9026 (R-A:9026)
- 10. Applique tack down 5543 (R-A:5675)
- 11. Applique placement line 9026 (R-A:9026)
- 12. Applique tack down 5543 (R-A:5675)
- 13. Applique placement line 9026 (R-A:9026)
- 14. Applique tack down 5543 (R-A:5675)
- 15. Charcoal 5565 (R-A:5565)
- 16. Natural White 5642 (R-A:5642)
- 17. Grilled Orange 9072 (R-A:9072)
- 18. Green 5509 (R-A:5509)
- 19. Sweet Dreams 9130 (R-A:9130)
- 20. Ash 5641 (R-A:5641)
- 21. Ivory 5635 (R-A:5635)
- 22. Emerald 5514 (R-A:5514)
- 23. Black Eyed Susie 5861 (R-A:5861)
- 24. Jockey Red 5581 (R-A:5581)
- 25. China Blue 5823 (R-A:5823)
- 26. Light Navy 5603 (R-A:5603)

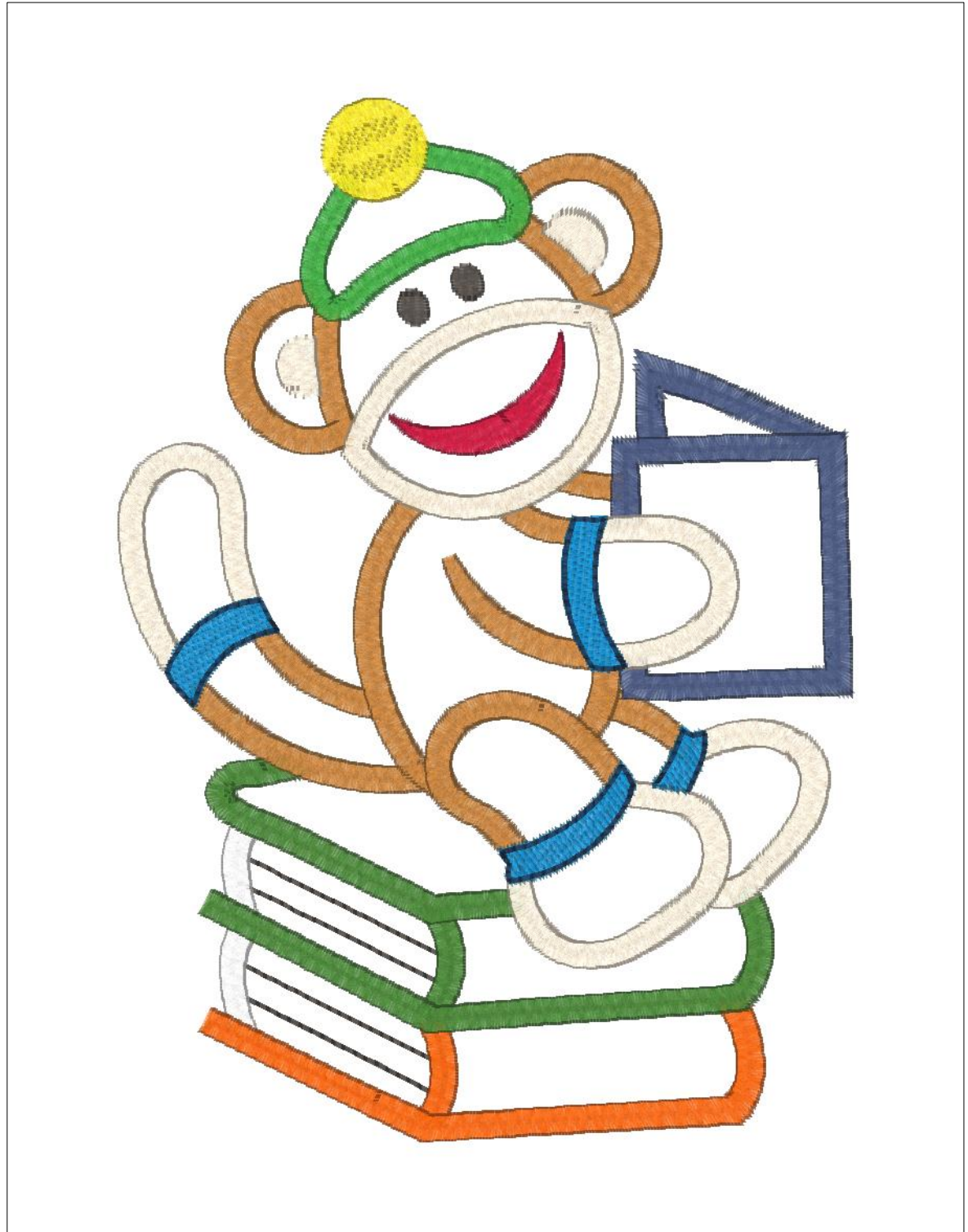


Design Notes:

Printed 6/20/2012

4.69x6.65 inches; 12,386 stitches
26 thread changes; 14 colors

- 1. Applique placement line 9026 (R-A-9026)
- 2. Applique tack down 5543 (R-A-5675)
- 3. Applique placement line 9026 (R-A-9026)
- 4. Applique tack down 5543 (R-A-5675)
- 5. Applique placement line 9026 (R-A-9026)
- 6. Applique tack down 5543 (R-A-5675)
- 7. Applique placement line 9026 (R-A-9026)
- 8. Applique tack down 5543 (R-A-5675)
- 9. Applique placement line 9026 (R-A-9026)
- 10. Applique tack down 5543 (R-A-5675)
- 11. Applique placement line 9026 (R-A-9026)
- 12. Applique tack down 5543 (R-A-5675)
- 13. Applique placement line 9026 (R-A-9026)
- 14. Applique tack down 5543 (R-A-5675)
- 15. Charcoal 5565 (R-A-5565)
- 16. Natural White 5642 (R-A-5642)
- 17. Grilled Orange 9072 (R-A-9072)
- 18. Green 5509 (R-A-5509)
- 19. Sweet Dreams 9130 (R-A-9130)
- 20. Ash 5641 (R-A-5641)
- 21. Ivory 5635 (R-A-5635)
- 22. Emerald 5514 (R-A-5514)
- 23. Black Eyed Susie 5961 (R-A-5861)
- 24. Jockey Red 5581 (R-A-5581)
- 25. China Blue 5823 (R-A-5823)
- 26. Light Navy 5603 (R-A-5603)



Design Notes:

Printed 6/20/2012

2.72x3.84 inches; 6,359 stitches
17 thread changes; 11 colors

1. Applique placement line 9026 (R-A:9026)
2. Applique tack down 5543 (R-A:5675)
3. Applique placement line 9026 (R-A:9026)
4. Applique tack down 5543 (R-A:5675)
5. Applique placement line 9026 (R-A:9026)
6. Applique tack down 5543 (R-A:5675)
7. Applique placement line 9026 (R-A:9026)
8. Applique tack down 5543 (R-A:5675)
9. Emerald 5514 (R-A:5514)
10. Sweet Dreams 9130 (R-A:9130)
11. Ivory 5635 (R-A:5635)
12. China Blue 5823 (R-A:5823)
13. Light Navy 5603 (R-A:5603)
14. Jockey Red 5581 (R-A:5581)
15. Charcoal 5565 (R-A:5565)
16. Cornsilk 5695 (R-A:5695)
17. Regal Purple 9021 (R-A:9021)

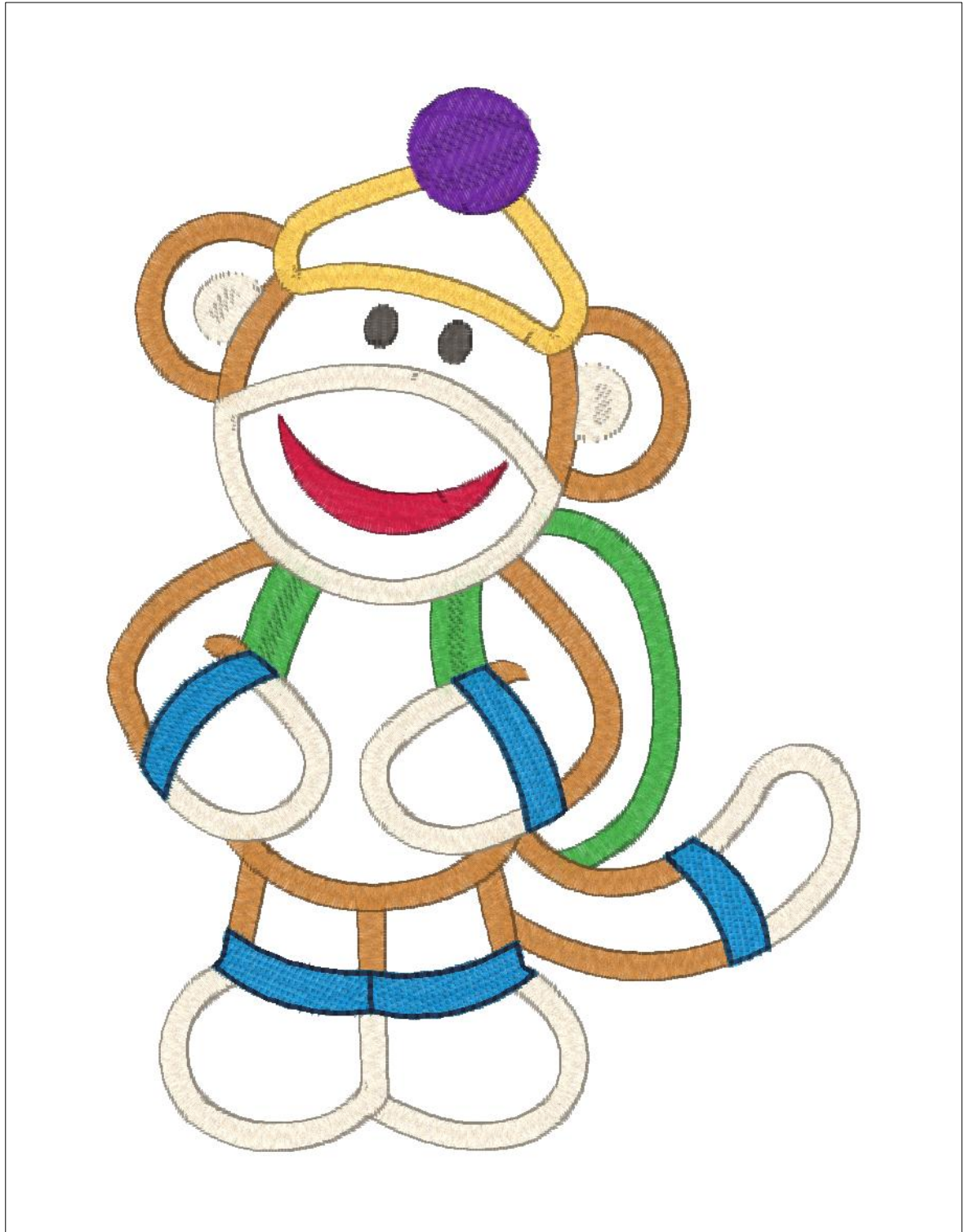


Design Notes:

Printed 6/20/2012

4.80x6.78 inches; 11,682 stitches
17 thread changes; 11 colors

- 1. Applique placement line 9026 (R-A-9026)
- 2. Applique tack down 5543 (R-A-5575)
- 3. Applique placement line 9026 (R-A-9026)
- 4. Applique tack down 5543 (R-A-5575)
- 5. Applique placement line 9026 (R-A-9026)
- 6. Applique tack down 5543 (R-A-5575)
- 7. Applique placement line 9026 (R-A-9026)
- 8. Applique tack down 5543 (R-A-5575)
- 9. Emerald 5514 (R-A-5514)
- 10. Sweet Dreams 9130 (R-A-9130)
- 11. Ivory 5635 (R-A-5635)
- 12. China Blue 5823 (R-A-5823)
- 13. Light Navy 5603 (R-A-5603)
- 14. Jockey Red 5581 (R-A-5581)
- 15. Charcoal 5565 (R-A-5565)
- 16. Cornsilk 5695 (R-A-5695)
- 17. Regal Purple 9021 (R-A-9021)

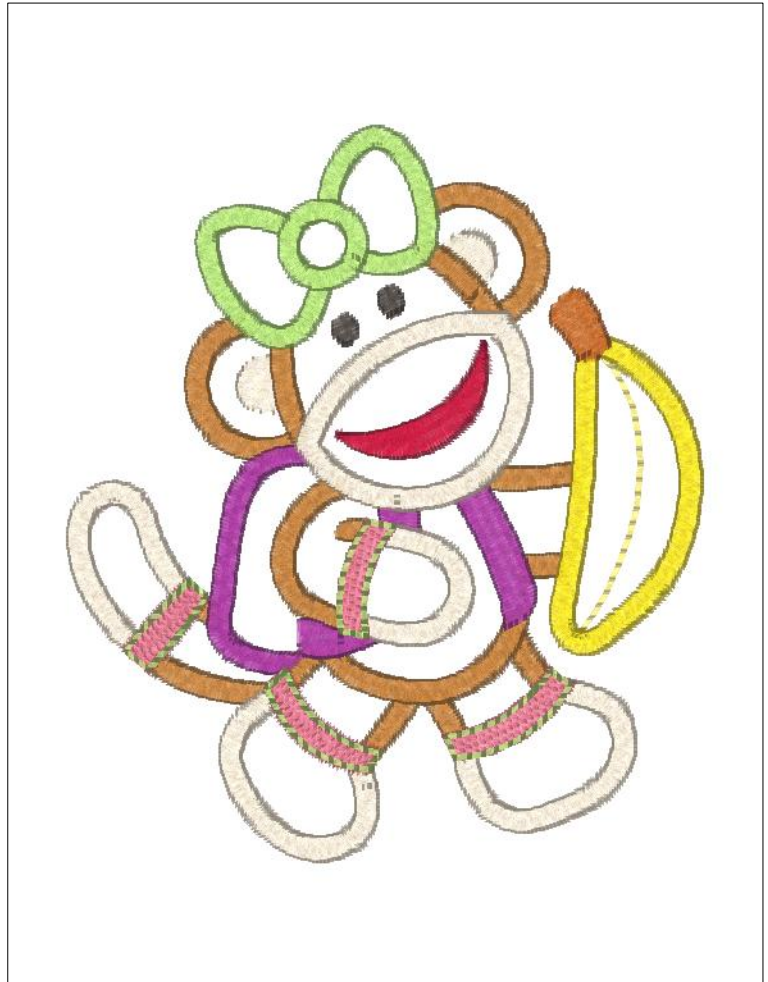


Design Notes:

Printed 6/20/2012

3.31x3.84 inches; 7,137 stitches
21 thread changes; 11 colors

1. Applique placement line 9026 (R-A:9026)
2. Applique tack down 5543 (R-A:5675)
3. Applique placement line 9026 (R-A:9026)
4. Applique tack down 5543 (R-A:5675)
5. Applique placement line 9026 (R-A:9026)
6. Applique tack down 5543 (R-A:5675)
7. Applique placement line 9026 (R-A:9026)
8. Applique tack down 5543 (R-A:5675)
9. Applique placement line 9026 (R-A:9026)
10. Applique tack down 5543 (R-A:5675)
11. Jockey Red 5581 (R-A:5581)
12. Ivory 5635 (R-A:5635)
13. Charcoal 5565 (R-A:5565)
14. Sweet Dreams 9130 (R-A:9130)
15. Rich Pink 9097 (R-A:9097)
16. Ivory 5635 (R-A:5635)
17. Neon Pink 5711 (R-A:5711)
18. Pastoral Green 5621 (R-A:5621)
19. Black Eyed Susie 5861 (R-A:5861)
20. Hazel 5781 (R-A:5781)
21. Pastoral Green 5621 (R-A:5621)

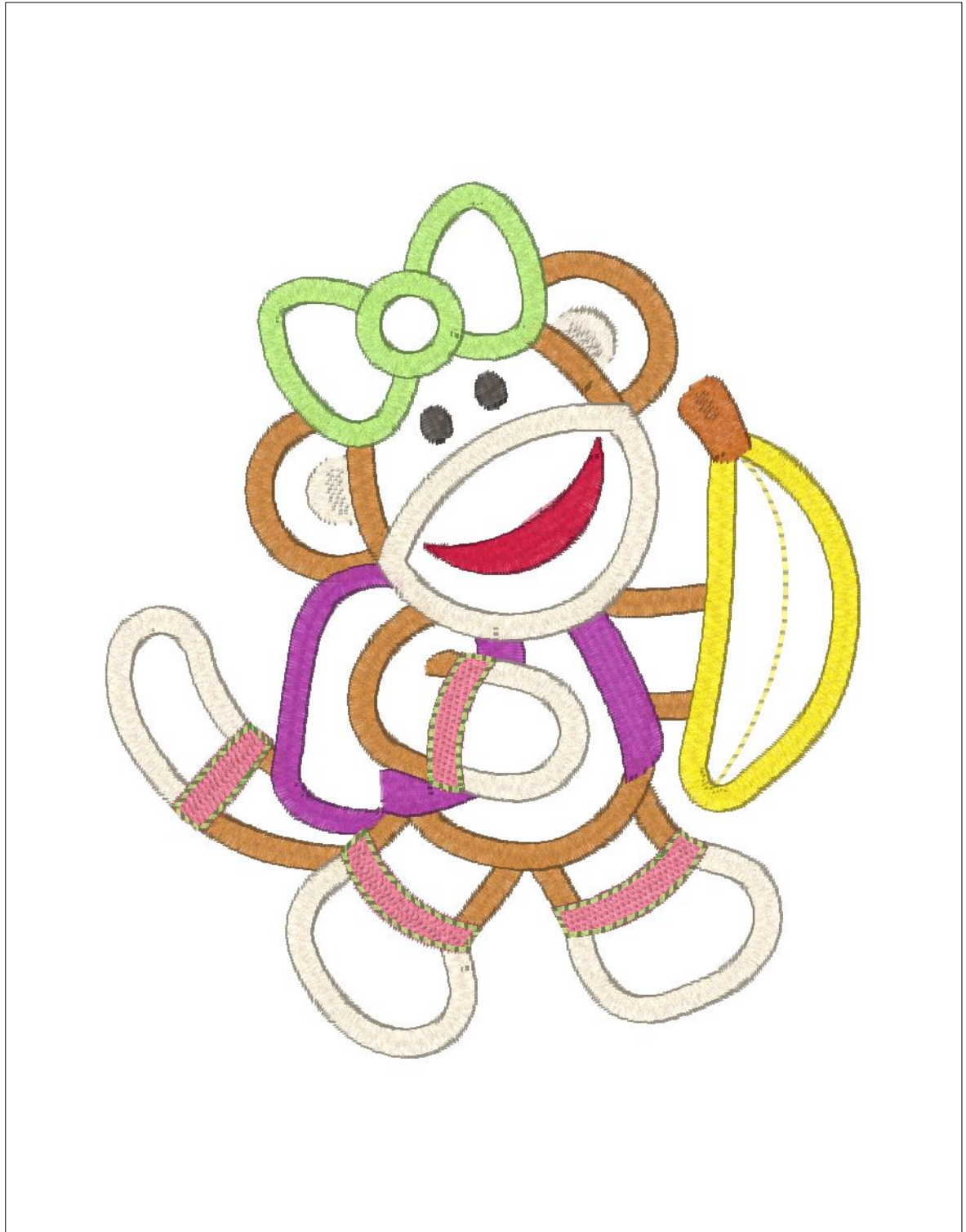


Design Notes:

Printed 6/20/2012

4.81x5.58 inches; 10,327 stitches
21 thread changes; 11 colors

- 1. Applique placement line 9026 (R-A:9026)
- 2. Applique tack down 5543 (R-A:5575)
- 3. Applique placement line 9026 (R-A:9026)
- 4. Applique tack down 5543 (R-A:5575)
- 5. Applique placement line 9026 (R-A:9026)
- 6. Applique tack down 5543 (R-A:5575)
- 7. Applique placement line 9026 (R-A:9026)
- 8. Applique tack down 5543 (R-A:5575)
- 9. Applique placement line 9026 (R-A:9026)
- 10. Applique tack down 5543 (R-A:5575)
- 11. Jockey Red 5581 (R-A:5581)
- 12. Ivory 5635 (R-A:5635)
- 13. Charcoal 5565 (R-A:5565)
- 14. Sweet Dreams 9130 (R-A:9130)
- 15. Rich Pink 9097 (R-A:9097)
- 16. Ivory 5635 (R-A:5635)
- 17. Neon Pink 5711 (R-A:5711)
- 18. Pastoral Green 5621 (R-A:5621)
- 19. Black Eyed Susie 5861 (R-A:5861)
- 20. Hazel 5781 (R-A:5781)
- 21. Pastoral Green 5621 (R-A:5621)



Design Notes:

Printed 6/20/2012

3.82x3.45 inches; 6,266 stitches
21 thread changes; 12 colors

1. Applique placement line 9026 (R-A:9026)
2. Applique tack down 5543 (R-A:5675)
3. Applique placement line 9026 (R-A:9026)
4. Applique tack down 5543 (R-A:5675)
5. Applique placement line 9026 (R-A:9026)
6. Applique tack down 5543 (R-A:5675)
7. Applique placement line 9026 (R-A:9026)
8. Applique tack down 5543 (R-A:5675)
9. Applique placement line 9026 (R-A:9026)
10. Applique tack down 5543 (R-A:5675)
11. Erin Green 5620 (R-A:5620)
12. Chocolate 5527 (R-A:5527)
13. Jockey Red 5581 (R-A:5581)
14. Sweet Dreams 9130 (R-A:9130)
15. Ivory 5635 (R-A:5635)
16. Jockey Red 5581 (R-A:5581)
17. China Blue 5823 (R-A:5823)
18. Light Navy 5603 (R-A:5603)
19. Grilled Orange 9072 (R-A:9072)
20. Black Eyed Susie 5861 (R-A:5861)
21. Charcoal 5565 (R-A:5565)

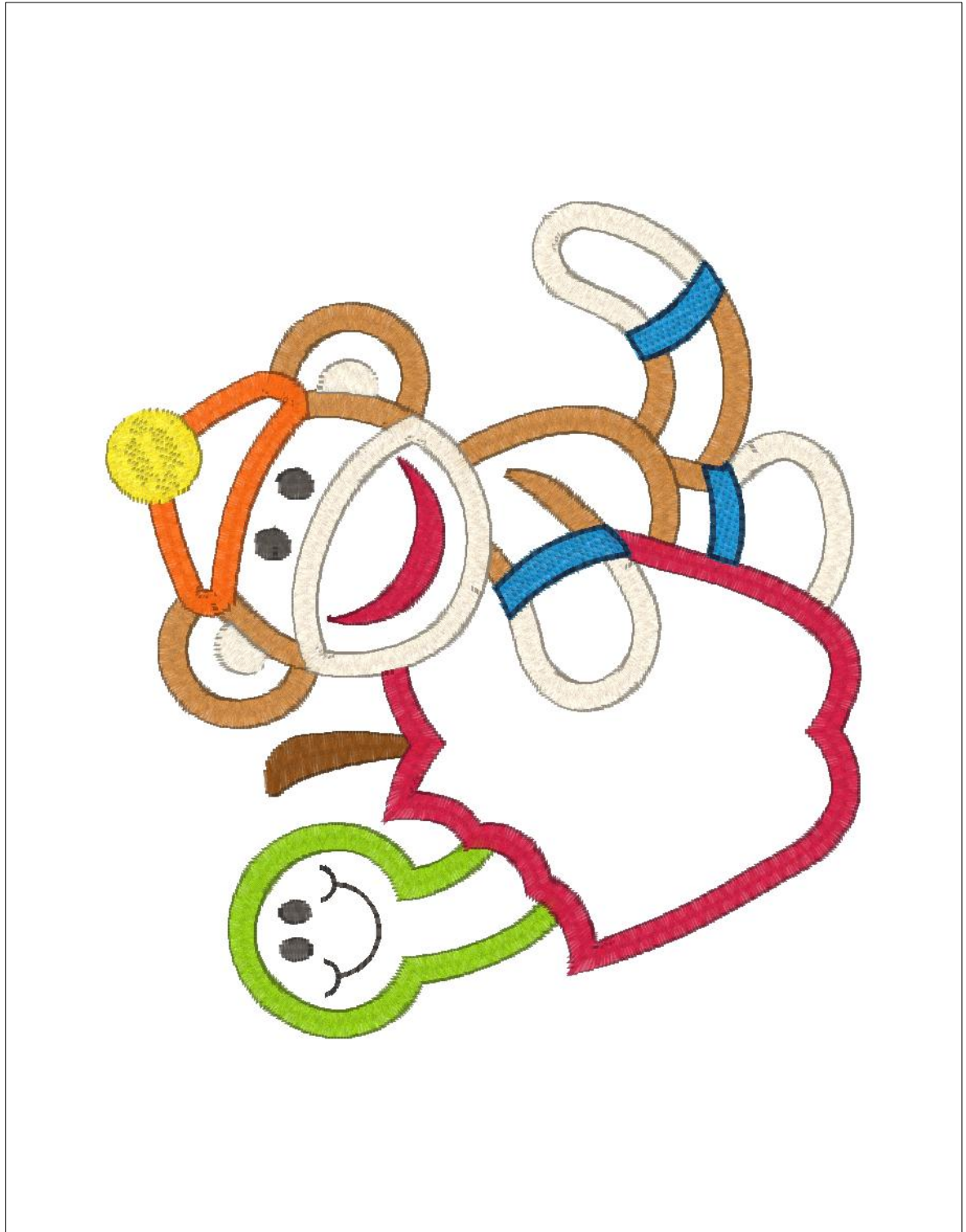


Design Notes:

Printed 6/20/2012

4.81x5.33 inches; 8,625 stitches
21 thread changes; 12 colors

- 1. Applique placement line 9026 (R-A:9026)
- 2. Applique tack down 5543 (R-A:5675)
- 3. Applique placement line 9026 (R-A:9026)
- 4. Applique tack down 5543 (R-A:5675)
- 5. Applique placement line 9026 (R-A:9026)
- 6. Applique tack down 5543 (R-A:5675)
- 7. Applique placement line 9026 (R-A:9026)
- 8. Applique tack down 5543 (R-A:5675)
- 9. Applique placement line 9026 (R-A:9026)
- 10. Applique tack down 5543 (R-A:5675)
- 11. Erin Green 5620 (R-A:5620)
- 12. Chocolate 5527 (R-A:5527)
- 13. Jockey Red 5581 (R-A:5581)
- 14. Sweet Dreams 9130 (R-A:9130)
- 15. Navy 5635 (R-A:5635)
- 16. Jockey Red 5581 (R-A:5581)
- 17. China Blue 5823 (R-A:5823)
- 18. Light Navy 5603 (R-A:5603)
- 19. Grilled Orange 9072 (R-A:9072)
- 20. Black Eyed Susie 5861 (R-A:5861)
- 21. Charcoal 5569 (R-A:5569)

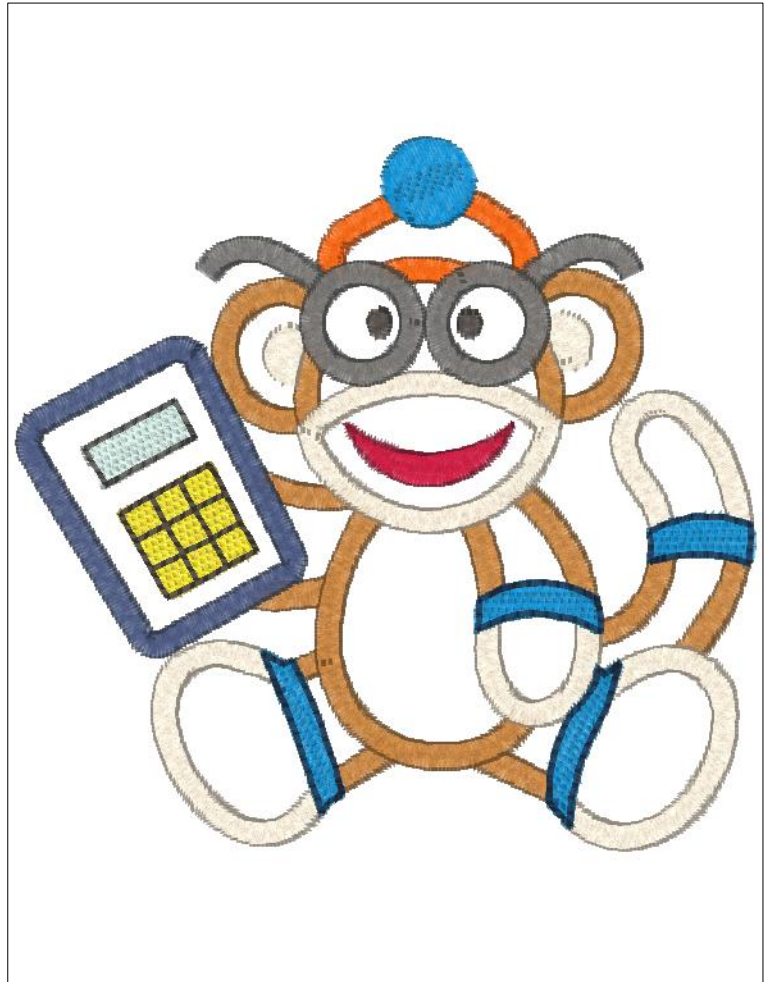


Design Notes:

Printed 6/20/2012

3.84x3.72 inches; 8,451 stitches
22 thread changes; 13 colors

1. Applique placement line 9026 (R-A:9026)
2. Applique tack down 5543 (R-A:5675)
3. Applique placement line 9026 (R-A:9026)
4. Applique tack down 5543 (R-A:5675)
5. Applique placement line 9026 (R-A:9026)
6. Applique tack down 5543 (R-A:5675)
7. Applique placement line 9026 (R-A:9026)
8. Applique tack down 5543 (R-A:5675)
9. Applique placement line 9026 (R-A:9026)
10. Applique tack down 5543 (R-A:5675)
11. Sweet Dreams 9130 (R-A:9130)
12. Ivory 5635 (R-A:5635)
13. Ash 5641 (R-A:5641)
14. Black Eyed Susie 5861 (R-A:5861)
15. Light Blue 5522 (R-A:5522)
16. Charcoal 5565 (R-A:5565)
17. Grilled Orange 9072 (R-A:9072)
18. China Blue 5823 (R-A:5823)
19. Aged Charcoal 5865 (R-A:5865)
20. Jockey Red 5581 (R-A:5581)
21. China Blue 5823 (R-A:5823)
22. Light Navy 5603 (R-A:5603)

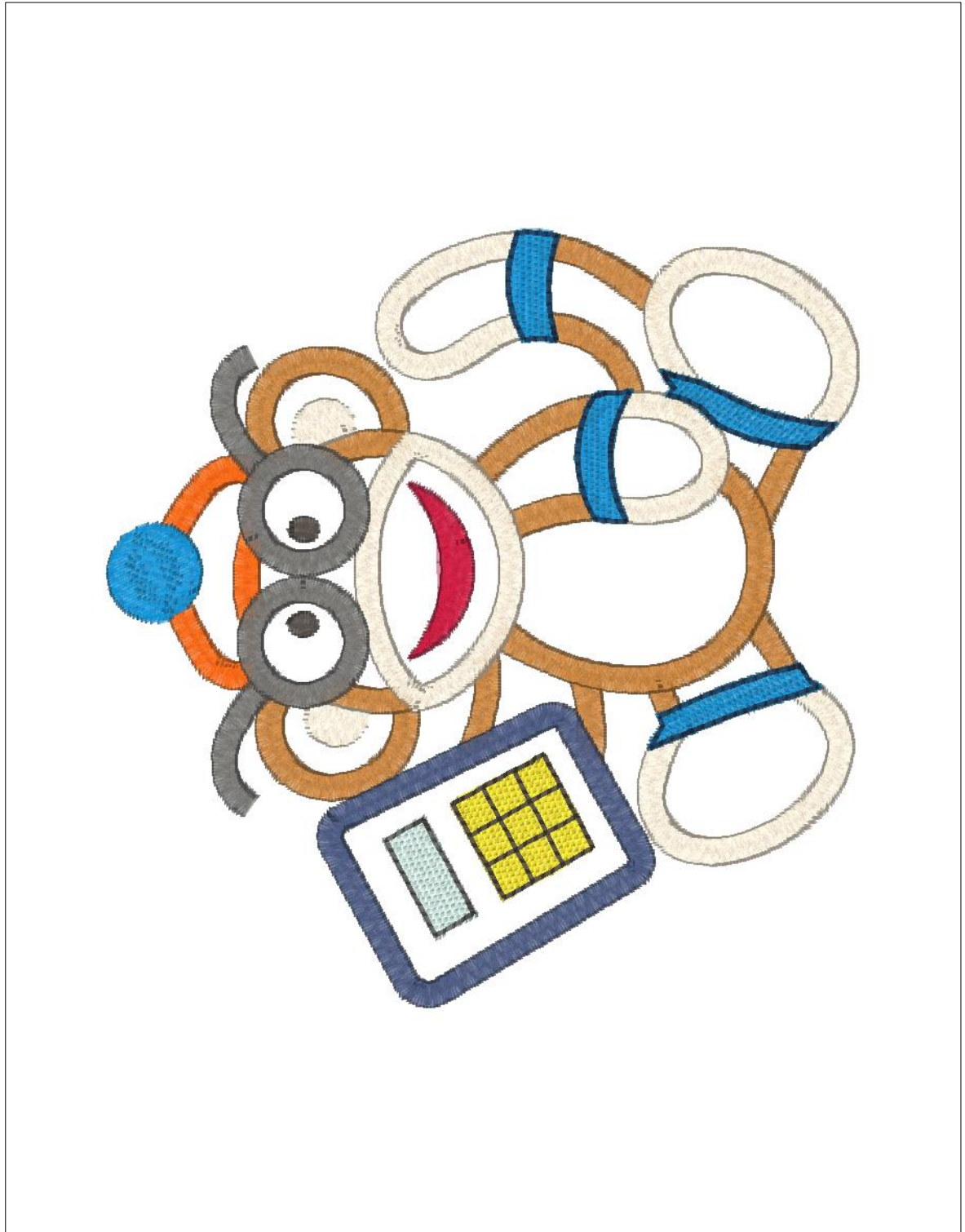


Design Notes:

Printed 6/20/2012

4.80x4.96 inches; 10,959 stitches
22 thread changes; 13 colors

- 1. Applique placement line 9026 (R-A-9026)
- 2. Applique tack down 5543 (R-A-5575)
- 3. Applique placement line 9026 (R-A-9026)
- 4. Applique tack down 5543 (R-A-5575)
- 5. Applique placement line 9026 (R-A-9026)
- 6. Applique tack down 5543 (R-A-5575)
- 7. Applique placement line 9026 (R-A-9026)
- 8. Applique tack down 5543 (R-A-5575)
- 9. Applique placement line 9026 (R-A-9026)
- 10. Applique tack down 5543 (R-A-5575)
- 11. Sweet Dreams 9130 (R-A-9130)
- 12. Ivory 5635 (R-A-5635)
- 13. Ash 5541 (R-A-5541)
- 14. Black Eyed Suele 5861 (R-A-5861)
- 15. Light Blue 5522 (R-A-5522)
- 16. Charcoal 5565 (R-A-5565)
- 17. Grilled Orange 9072 (R-A-9072)
- 18. China Blue 5823 (R-A-5823)
- 19. Aged Charcoal 5865 (R-A-5865)
- 20. Jockey Red 5581 (R-A-5581)
- 21. China Blue 5823 (R-A-5823)
- 22. Light Navy 5603 (R-A-5603)



Design Notes: