

- 1 13
- 2 14
- 3 15
- 4
- 5
- 6
- 7
- 8
- 9
- 10
- 11
- 12



File: DBJJ300-1-5X7.ART
Stitches: 8478
Size: 124.1 x 132.0 mm

Colors: 13/15
Stops: 14

- 1 13
- 2 14
- 3 15
- 4 16
- 5 17
- 6 18
- 7 19
- 8 20
- 9
- 10
- 11
- 12



File: DBJJ300-2-5X7.ART
Stitches: 8227
Size: 125.0 x 131.5 mm

Colors: 12/20
Stops: 19

- 1 13
- 2 14
- 3
- 4
- 5
- 6
- 7
- 8
- 9
- 10
- 11
- 12



File: DBJJ300-3-5X7.ART
Stitches: 10246
Size: 102.9 x 149.0 mm

Colors: 14/14
Stops: 13

This documentation was created with Embird 2006 software registered to Julie Hesketh.
For more information regarding Embird 2006 please visit web site at <http://www.embird.com>.

- 1 13
- 2 14
- 3 15
- 4 16
- 5
- 6
- 7
- 8
- 9
- 10
- 11
- 12



File: DBJJ300-4-5X7.ART
Stitches: 11976
Size: 123.3 x 144.5 mm

Colors: 12/16
Stops: 15

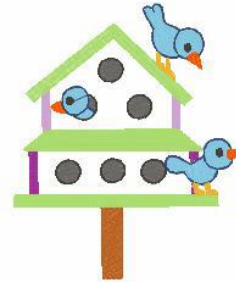
- 1 13
- 2 14
- 3 15
- 4 16
- 5
- 6
- 7
- 8
- 9
- 10
- 11
- 12



File: DBJJ300-5-5X7.ART
Stitches: 10468
Size: 119.7 x 157.2 mm

Colors: 14/16
Stops: 15

- 1 13
- 2 14
- 3
- 4
- 5
- 6
- 7
- 8
- 9
- 10
- 11
- 12



File: DBJJ300-6-5X7.ART
Stitches: 9509
Size: 120.7 x 146.3 mm

Colors: 12/14
Stops: 13

- 1 13
- 2 14
- 3 15
- 4 16
- 5 17
- 6
- 7
- 8
- 9
- 10
- 11
- 12



File: DBJJ300-7-5X7.ART
Stitches: 9154
Size: 124.8 x 128.0 mm

Colors: 14/17
Stops: 16

- 1 13
- 2 14
- 3 15
- 4 16
- 5 17
- 6 18
- 7
- 8
- 9
- 10
- 11
- 12



File: DBJJ300-8-5X7.ART
Stitches: 7975
Size: 108.9 x 135.7 mm

Colors: 15/18
Stops: 17

